



Certificate of Analysis

Lot	20250318 / PR01225
Reference #	MBIO-7974
Concentration	14.95 μ M (2.54 mg/mL)
Amount per vial	0.1 mg
Volume per vial	40 μ L

MBIO-7974 (Novobody™ Duo, anti-Histidine tag)

Description

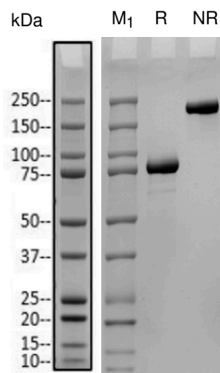
Molecule	Custom de novo protein (Novobody™ Duo), human Fc fusion
Source	Expressed in CHO cells, Purified via ProA
Target	Histidine tag
Characterization	SDS-PAGE, SEC-HPLC, BioLayer Interferometry, and Flow Cytometry

Specifications

Physical Appearance	Liquid, clear
Molecular Weight	170.0 kDa
Buffer Conditions	1X PBS, pH 7.2

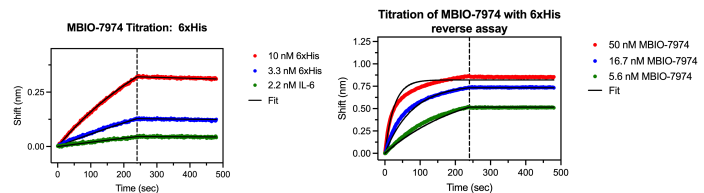
SDS-PAGE

Gel analysis of final purified sample after nickel affinity purification and size exclusion chromatography. Sample appears at the expected molecular weight of 170 kDa in the non-reduced gel and 85 kDa in the reduced gel.



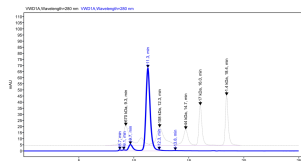
BioLayer Interferometry

Sample binds target analyte with high affinity, slow off-rate, and an estimated K_D of 0.51 nM, K_{on} of $2.58E+05$ 1/Ms and K_{off} of $1.33E-04$ 1/s when MBIO-7974 is loaded onto GatorBio anti-Human IgG probes and his-tagged analyte (Acro Biosystems Cat #: CD8-H52H4) is titrated at 10, 3.3, and 1.1 nM (left). In a reverse assay, sample binds analyte with an estimated K_D of <0.001 nM, K_{on} of $7.71E+05$ 1/Ms and K_{off} of $<1.00E-06$ 1/s when his-tagged analyte (Acro Biosystems Cat #: HE2-H822R) is loaded onto GatorBio streptavidin probes and MBIO-7974 is titrated at 50, 16.7, and 5.6 nM (right).



SEC-HPLC

Size exclusion chromatography coupled with high performance liquid chromatography demonstrates that the sample elutes at the expected molecular weight and is $>95\%$ monomer.



Shipping, Storage, and Handling

The product is shipped frozen. Upon receipt, immediately store protein aliquots at -80°C . When ready to perform an assay, thaw the tube at room temperature and sub-aliquot based on plans for future testing. Limit freeze thaws to 2 total freeze thaw cycles. The expected stability for the product is 12 months when stored at -80°C under sterile conditions.

Concentrations are indicated above and on the individual tubes. If an exact concentration is desired, Nanodrop (A280) the protein using the following Extinction Coefficient: 127090.00 M $^{-1}$ cm $^{-1}$.

Contact Information:

partnerships@monod.bio

Ver 1.0